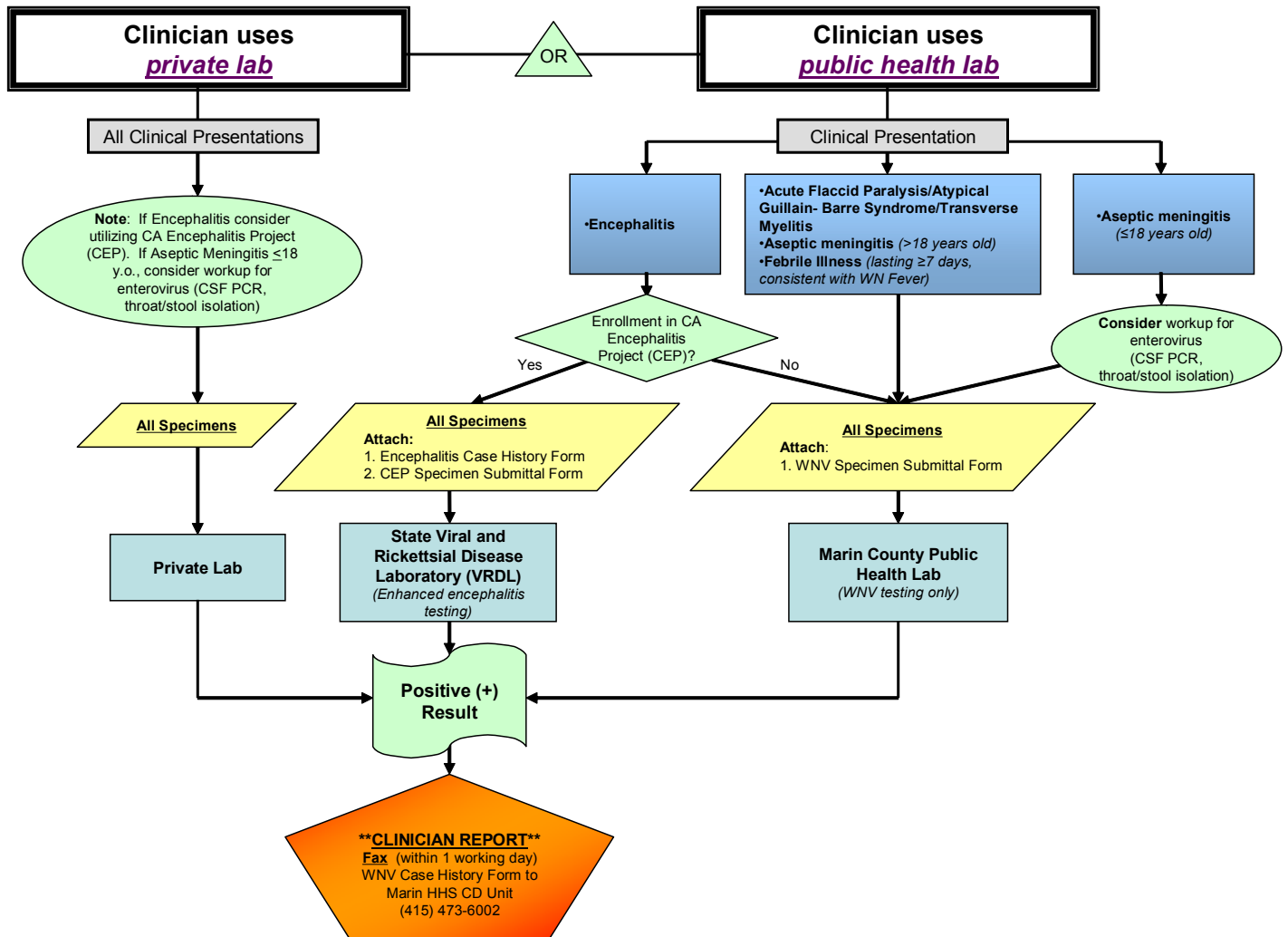


West Nile Virus Specimen Algorithm

Marin County Department of Health and Human Services



See related state & county forms on web at:

<http://www.co.marin.ca.us/depts/HH/Main/hs/PublicHealth/WNV/WNV.cfm#clinicians>

Reporting Instructions

- Clinicians should report all laboratory test positive (EIA or IFA) cases of WNV within one working day (Mon - Fri) to the Marin County HHS Communicable Disease unit by faxing the West Nile Virus Case History Form to **(415) 473-6002** or by phone to **(415) 473-7805**

Contact Information:

Marin County HHS Public Health Lab

Mon-Fri 8 AM- 5 PM
920 Grand Ave.
San Rafael, CA 94901
(415) 499-6849, 507-4133

Marin County HHS Communicable Disease Unit

Mon-Fri 8:30 AM- 5 PM

- (415) 473-7805
- (415) 473-2623

After hrs: County Comm. Center

- (415) 499-7235
- (415) 499-7237
- (415) 499-7238

Ask for the Public Health Officer

State Viral and Rickettsial Disease Lab

Specimen Receiving
850 Marina Bay Parkway
Richmond CA 94804

West Nile Surveillance Coordinator
Phone: (510) 307-8606
Fax: (510) 307-8599